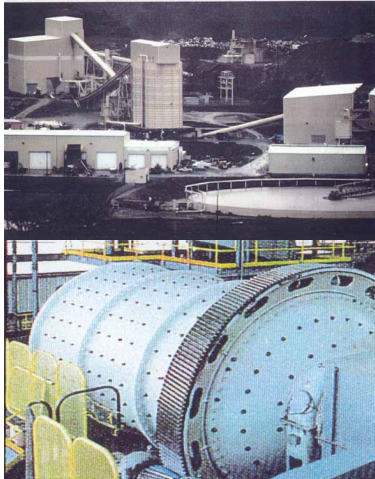


# 6000- 10,000 TPD Flotation Mill (Formerly Sonora Gold Plant)

Located at West Coast USA Port; Dismantled and Match-Marked for Immediate Sale/Shipping

- Allis-Chalmers 48" x 60" Jaw Crusher
- Nordberg 7' Standard Cone Crusher
- Nordberg 7' Shorthead Cone Crusher
- Tyler/Ty-Rock 8' x 16' 2-Deck Scrns (2 ea.)
- Tyler/Ty-Rock 7' x 16' 2-Deck Screen
- Hard. 14' x 23.5', 2500HP Ball Mills (2 ea.)
- Hardinge 13' x 19.5', 1500HP Rod Mill
- Hardinge 11' x 18.5', 1000HP Ball Mill
- 72" x 27' Belt Feeder
- 48" x 32.5' Belt Feeders (4 ea.)
- 42" x 465' Truss Conveyor
- 42" x 248' Truss Conveyor
- 42" x 247' Truss Conveyor
- 42" x 247' Truss Conveyor
- 42" x 180' Truss Conveyor
- Eriez Belt Magnet
- 1.5" to 8" Galig. Vert SRL Pumps (45 ea.)
- 4"-14" Ash/Den/GIW Horz Pumps (26 ea.)
- 10" & 20" Krebs Cyclones (8 ea.)



- Dorr-Oliver 1350 Cu./Ft. Flt Cells(2 ea.)
- Galigher 500 Cu./Ft. Flt Cells (32 ea.)
- Deister 48" x 41' Column Float Cell
- Dorr-Oliver 300' Thickener
- Dorr-Oliver 75' Thickener
- Peterson 10' x 16' Drum Filters (2 ea.)
- Nash CL 3003 Vacuum Pumps (2 ea.)
- ACC 42" x 42" Duplex Jigs (4 ea.)
- 5-Ton to 25-Ton Overhead Cranes (5 ea.)
- Ducon UW-4 Dust Collectors (5 ea.)
- Truck Shop/Warehouse
- Crusher Building
- Concentrator Building
- Reagent Building

## **Gold Room w/ the Following Equipment:**

Deister SuperDuty Conc Table, Lightning Mixers, Pumps, and Sweco Screens  
**Engineering and Construction Drawings Available for Complete Plant.**

## **More Major Grinding and Crushing Equipment Available For Immediate Sale**

### Mills

- Hardinge 32' x 14', 7,000HP SAG
- Hardinge 20' x 6', 1,250HP SAG
- Hardinge 18' x 9', 1,500HP SAG
- M/H 13' x 20', 1,750HP Ball/Rod (2 ea.)
- Allis-Chalmers 12.5' x 15', 1500HP Ball
- Dominion 10.5' x 16', 1,000HP Ball/Rod

### Mills

- Marcy 10.5' x 14', 900HP Ball
- Hardinge 9.5' x 15', 700HP Ball
- Allis-Chalmers 9' x 12' 450HP Ball (2 ea.)
- Allis-Chalmers 8' x 12' 350HP Ball (2 ea.)
- Marcy 8' x 5.5' 200HP Ball
- Marcy 7.5' x 5' 150HP Ball

### Crushers

- Traylor 54" x 84" Gyratory.
- Allis-Chalmers 48" x 60" Jaw
- Eagle 42" x 54" Jaw
- Diamond 42" x 48" Jaw
- Telsmith 84" Gyrasphere Cone
- Nordberg 7' STD & SH Cone

## **ATLAS MINE AND MILL SUPPLY, INC.**

N 1115 Havana St . Spokane WA, 99202 - Phone (509) 535-2039 - Fax (509) 535-2090

e-mail: [sales@atlasminemillsupply.com](mailto:sales@atlasminemillsupply.com) website: [www.atlasminemillsupply.com](http://www.atlasminemillsupply.com)